

FSM og rdt.

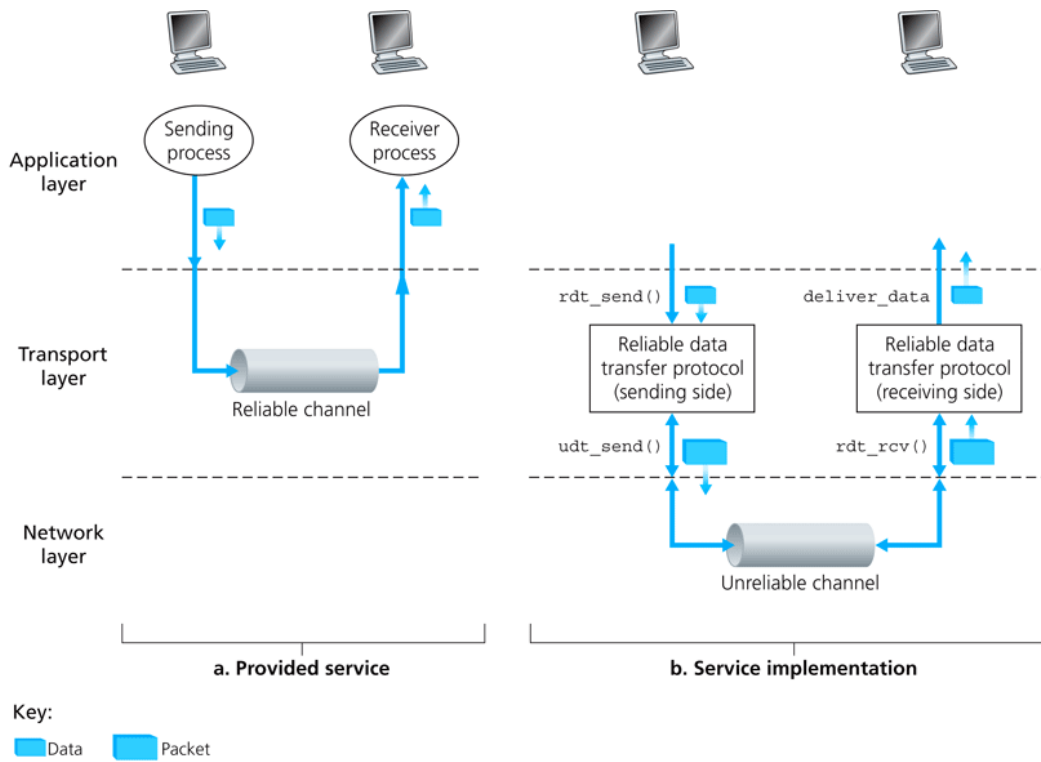


Figure 3.8 ♦ Reliable data transfer: Service model and service implementation

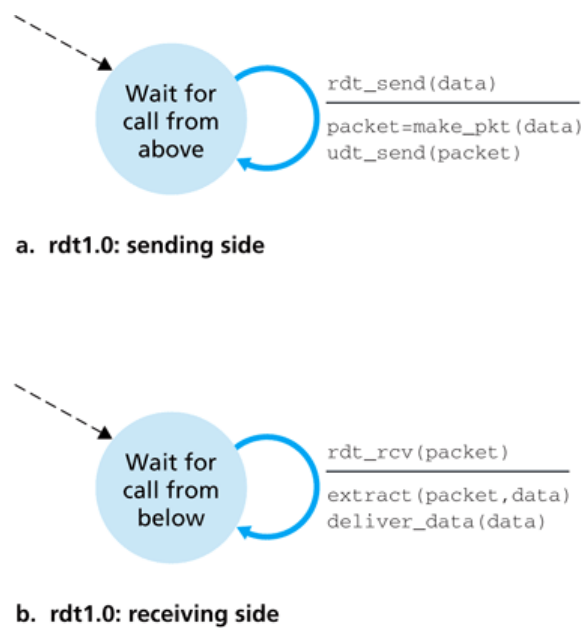
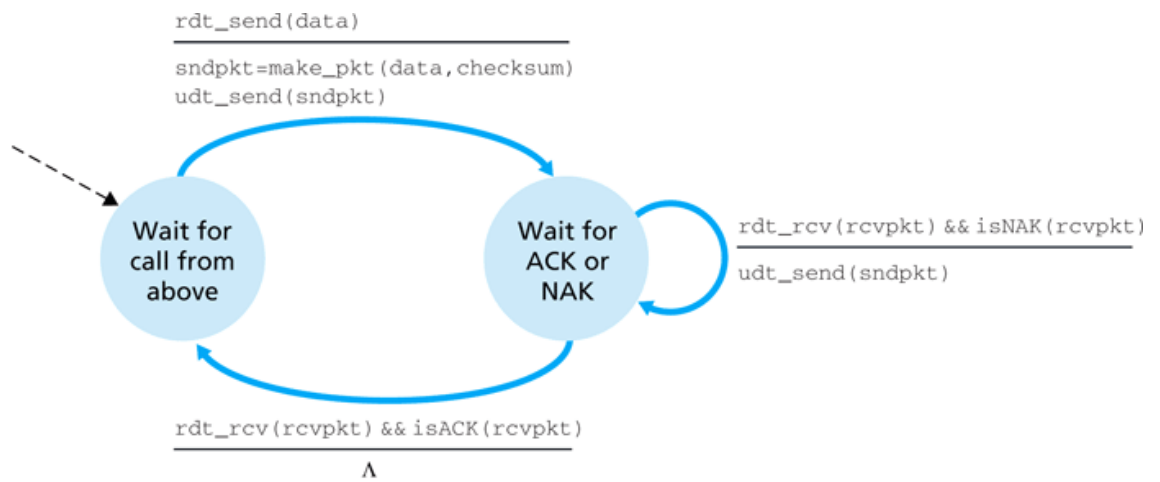
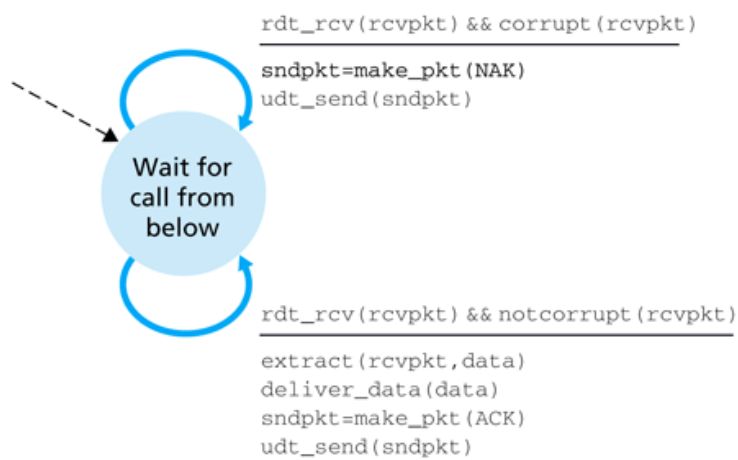


Figure 3.9 ♦ rdt1.0 – A protocol for a completely reliable channel

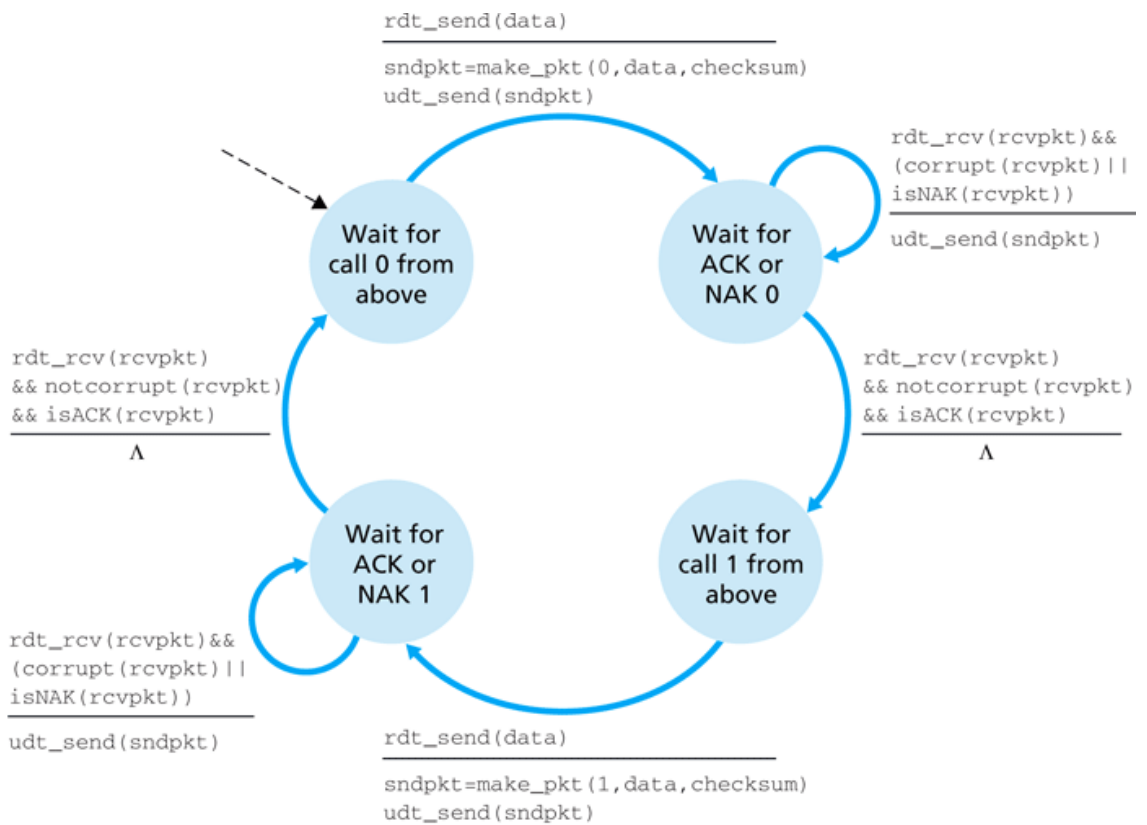


a. rdt2.0: sending side

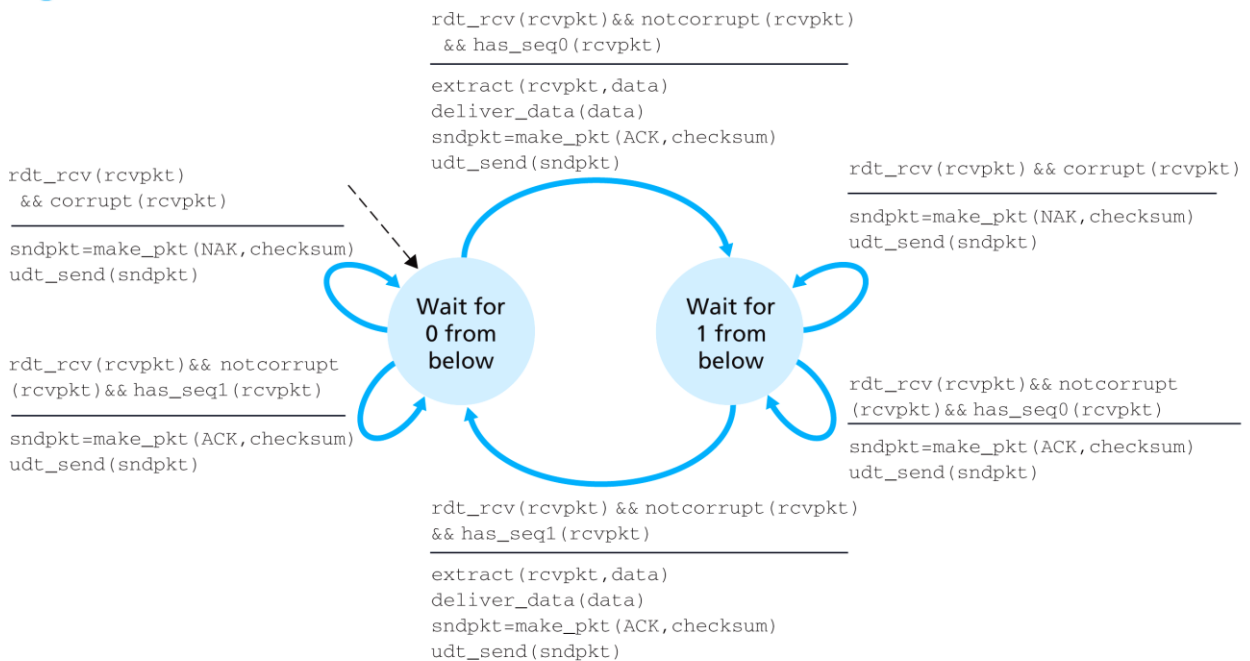


b. rdt2.0: receiving side

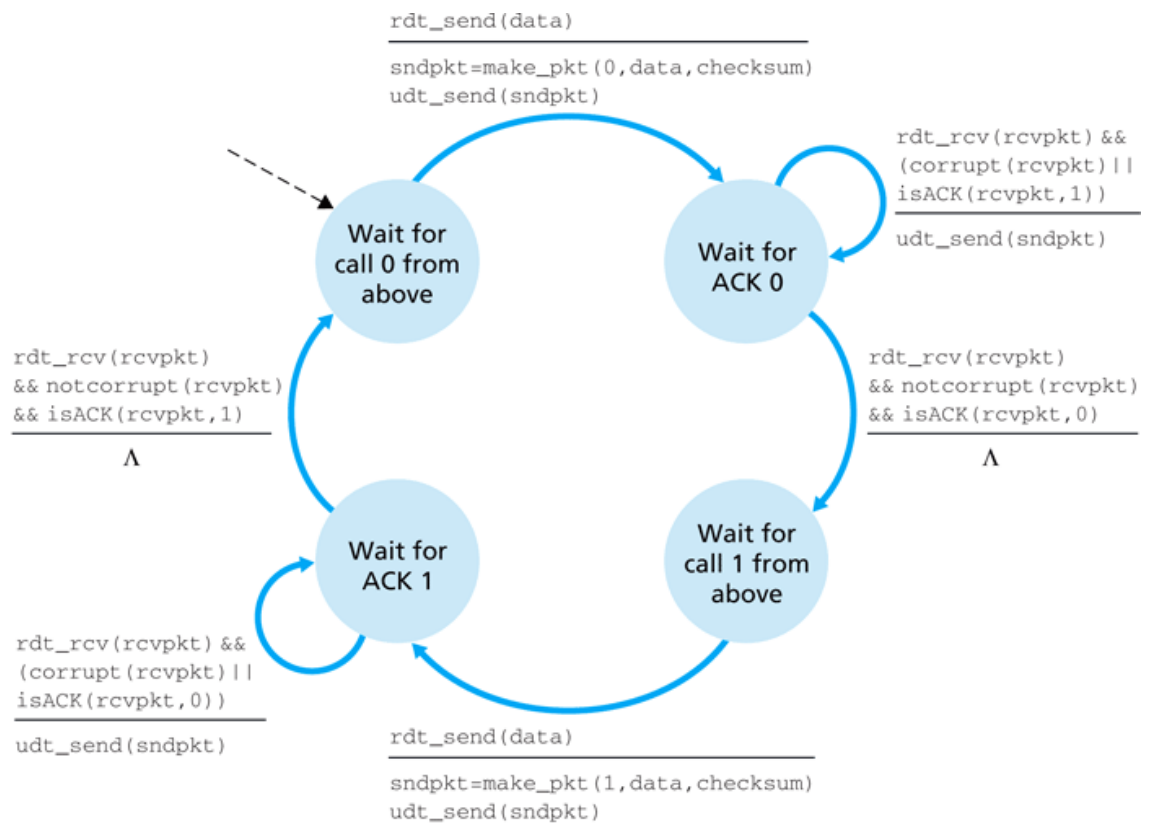
**Figure 3.10** ♦ rdt2.0—A protocol for a channel with bit errors



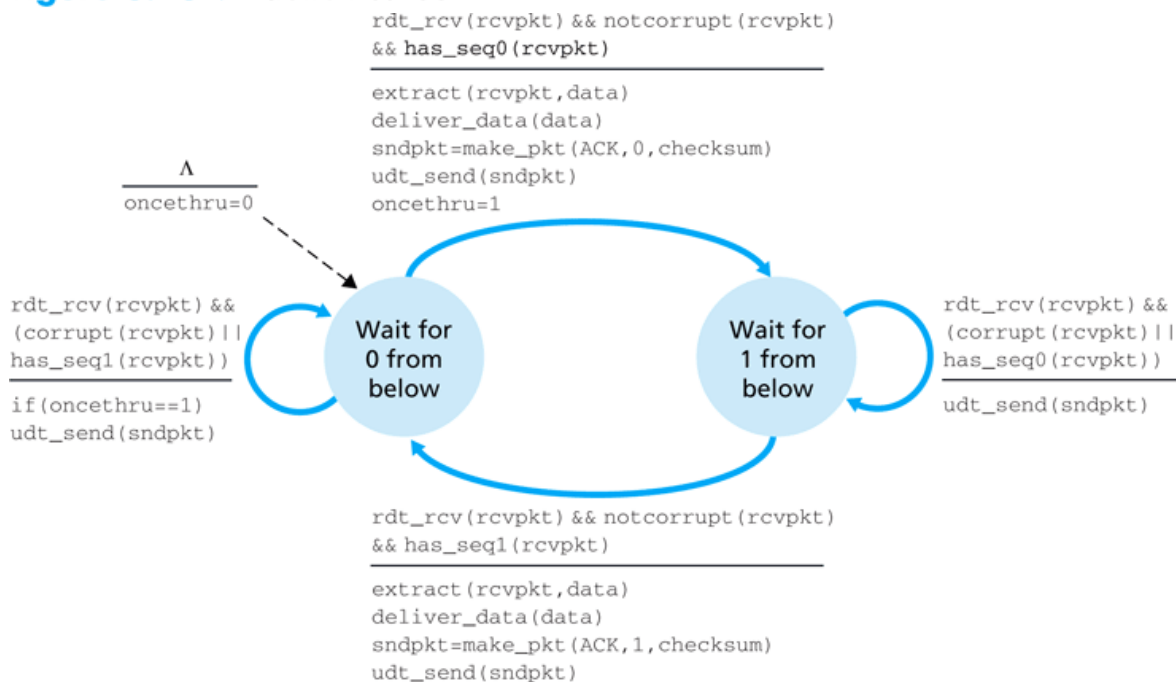
**Figure 3.11** ♦ rdt2.1 sender



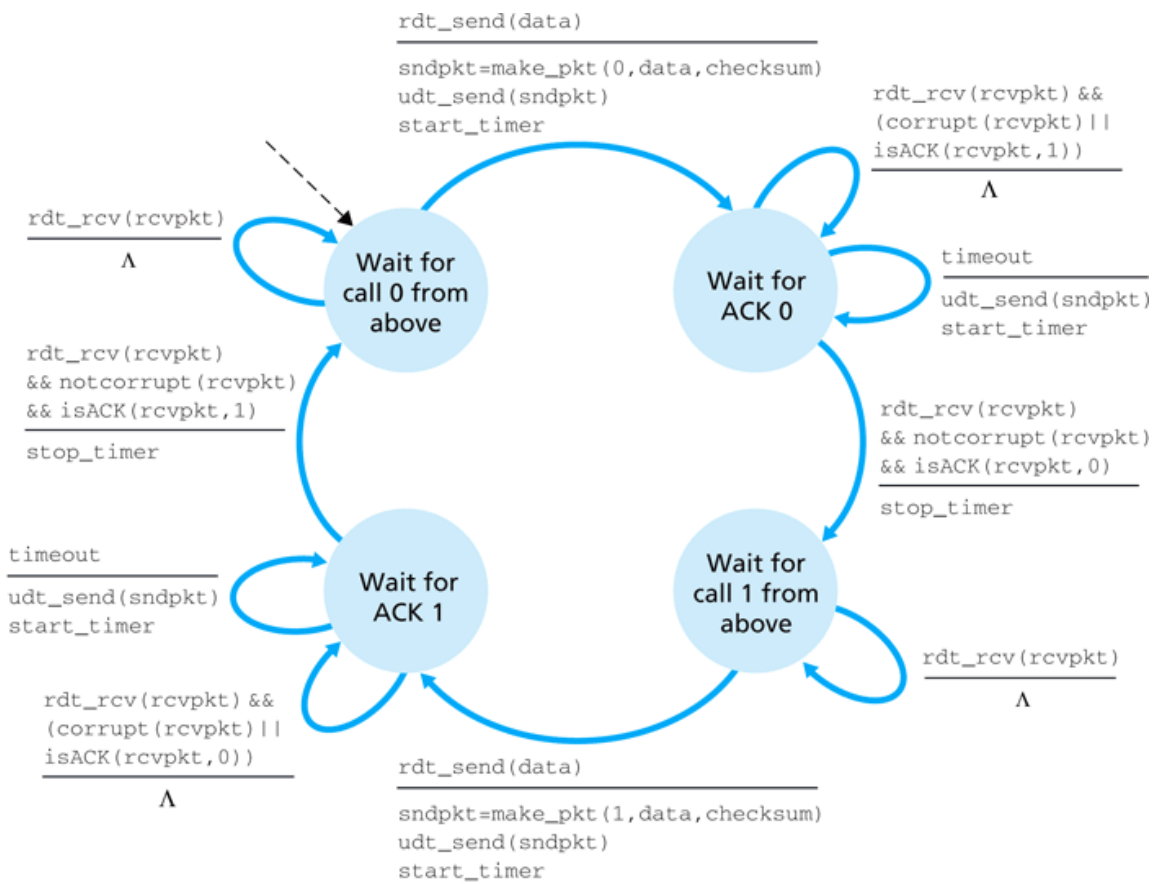
**Figure 3.12** ♦ rdt2.1 receiver



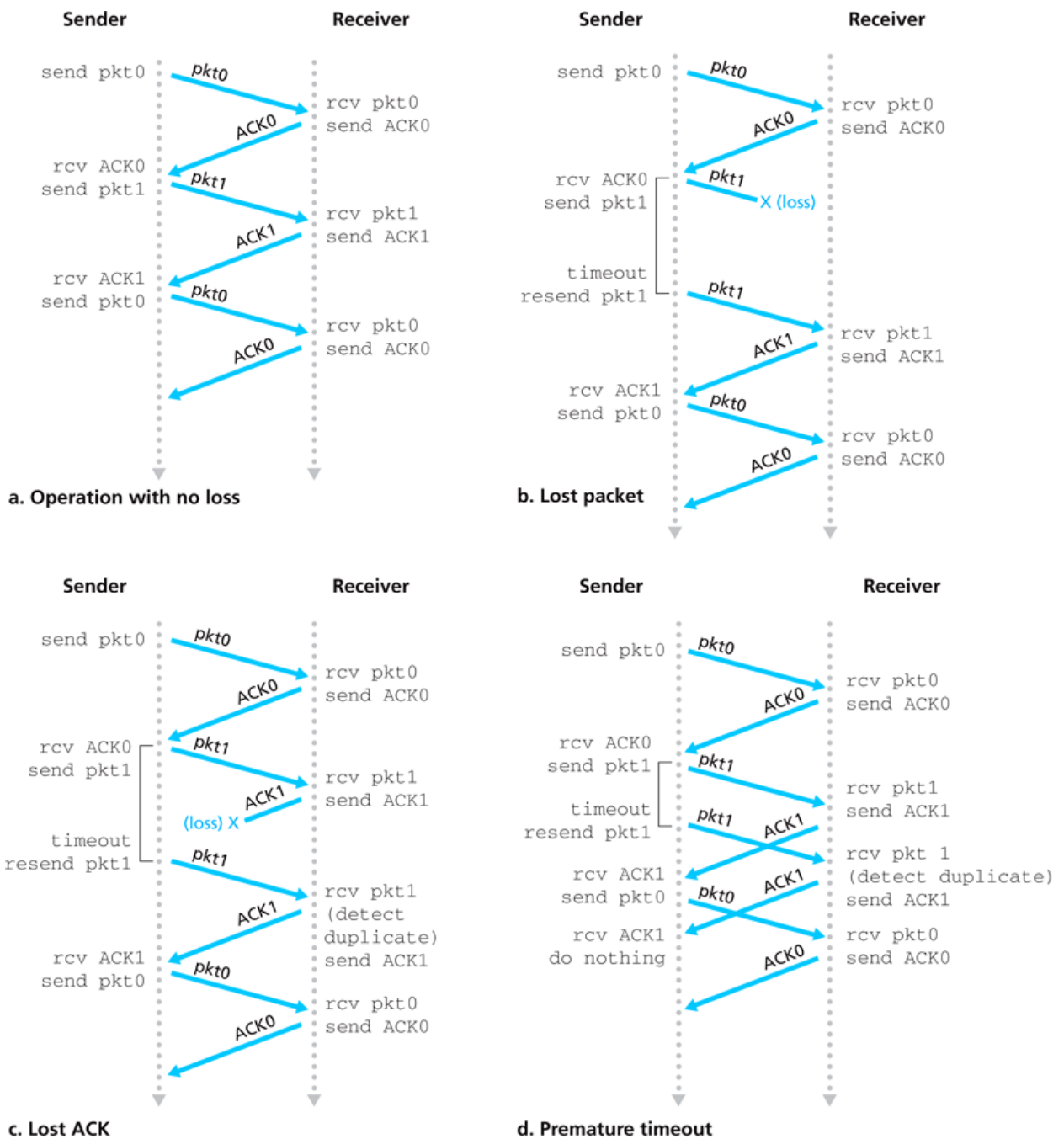
**Figure 3.13** ♦ rdt2.2 sender



**Figure 3.14** ♦ rdt2.2 receiver



**Figure 3.15** ♦ rdt3.0 sender



**Figure 3.16** ♦ Operation of rdt3.0, the alternating-bit protocol

